

**FUTURE
READY**



NEBRASKA

BlendEd in the Math Classroom



Deb Bulin

Thayer Central High School

deb.bulin@thayercentral.net

**BlendEd in the
Math Classroom**

A little bit about me:

- Will be my 28th year at TC/Hebron (31 years of teaching and 7 years of subbing)
 - Pre-Alg, Alg, Geom, College Alg/Trig, Tech Math - Coding in the past
- Graduated from UNL - both undergrad and masters
- Live on an acreage outside of Bruning
- Have 4 grown children
- 2019 Presidential Award Recipient for Excellence in Mathematics Teaching
- Have held various positions on the NATM board
- Currently managing Hebron Pool
- Love the Huskers, Royals and Chiefs



What we will be talking about:

- What is BlendEd?
- Why BlendEd?
- Some technology pieces to use.
- Some other activities to use.

“I did then what I knew how to do. Now that I know better, I do better.”

—**Maya Angleou**

What is BlendEd?



BlendEd

My definition of BlendEd is incorporating a combination of technology and hands-on activities or tasks to learn or practice a concept. It can be done in groups or individually.

Why is
BlendEd?



BlendEd

BlendEd gives students at all levels and learning styles an opportunity to complete tasks and hopefully learn the material or master the concepts with additional practice.



Some technology that I use

- Kahoot – Quizizz
- Wordwall - Nearpod
- Google Forms
 - quizzes/check for understanding
 - escape rooms
 - math libs/scavenger hunts
- IXL (or a similar practice site)

Some Examples

[Google Form Example - quiz](#)

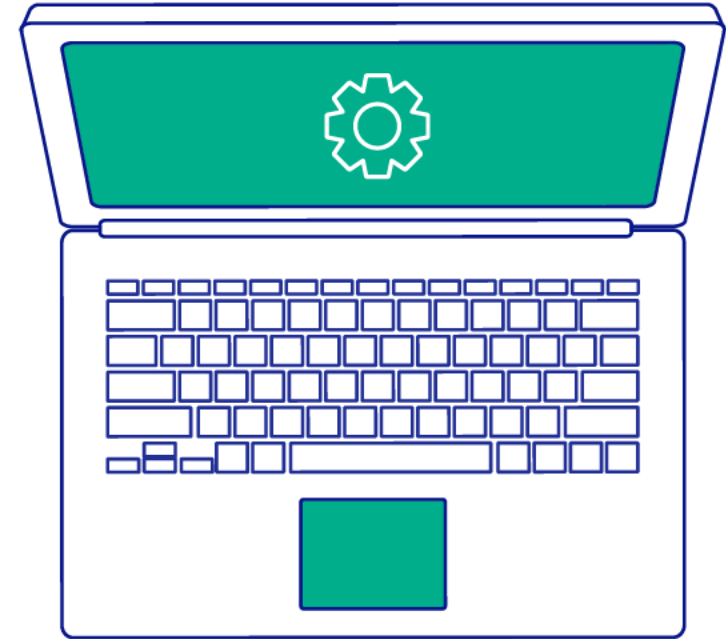
[Google Form Example - Escape Room](#)

[Nearpod Example](#)

[Wordwall Examples](#)

[Quizizz Example](#)

[Kahoot Example](#)





Some technology that I would like to try

- Desmos
- Khan Academy
- Blooket (assigning)
- Creating my own pixel art online activities
- Quizalize
- 99Math
- Bamboozle
- Using BingoBaker

Non-tech Activities that I use

- Homework Sums
- Cut and Paste (tarsia – matching)
- Puzzles
- Scavenger Hunts – Math Libs
- Games – Jenga, Tic-Tac-Toe

Examples:

This one is used individually.
The technology pieces are
the Quizizz and Word Wall.

BlendEd Activities for Solving One-Step Equations

All activities will be done on your own. You will have two class periods to complete the activities – they are due at the beginning of class on Wednesday.

Name: _____

Station 1

Word Wall Quiz Show

<https://wordwall.net/play/4513/406/218>

Station 2

Scavenger Hunt

You will complete the scavenger hunt in the hallway.

Station 3

Skeleton WS

You will complete the Solving

One Step Equations WS.

(Why Didn't the Skeleton Go to the Halloween Party?)

SHOW ALL WORK on the paper
and follow the directions.

Station 4

Quizizz

You will sign in with one of your names – let me know who:

via game code

1. Ask participants to open
[joinmyquiz.com](https://www.joinmyquiz.com)

2. And enter this code
6440 7342

When finished with all stations - staple all activities to this paper in order of Stations and turn in – then work on the Practice Quiz for Wednesday.

Examples:

This one is used with groups. The only technology I used here is IXL.

Tic - Tac - Toe Trig

You and your partner must make a Tic-Tac-Toe using the middle square. Your Tic-Tac-Toe can be horizontal, vertical or diagonal.

IXL - Pre Calc M12 Solve a right triangle	Maze 1 Law of Sines and Law of Cosines	IXL - Pre Calc M13 Law of Sines
JENGA Play Jenga. Each person must answer 4 questions and record on <u>answering sheet</u> .	Make a Review Game Must have 2 Right Triangle, 2 Law of Sines and 2 Law of Cosines along with 4 word problems. Can be Kahoot, Quizizz, Scavenger Hunt, Math Lib, Connect 4 game, worksheet etc.	IXL - Pre Calc M15 Solve a triangle
Maze 2 Law of Sines and Law of Cosines	IXL - Pre Calc M14 Law of Cosines	Homework Sums Complete 3 of the 5 Homework Sum Sheets

Examples:

This one is used individually. The technology pieces are the Quizizz and an Escape Room.

BlendEd Stations for 3-6 Parallel Lines and Transversals

Names: _____

Station 1

Notes and
Escape Room
BlendEd 3.6 Station 1 - Parallel Lines
Cut by a Transversal Digital Escape!
(Code will be emailed)

Station 2

Math Lib

Station 3

Slope Problems

Station 4

Quizizz

via game code

1. Ask participants to open
joinmyquiz.com

2. And enter this code
0364 8942

Name used: _____

Examples:

This one is used with groups or individuals. The technology pieces are the Quizizz and IXL.

TIC – TAC – TOE

Solving $ax + b = cx + d$

Names: _____

You and your partner must make a TIC-TAC-TOE with the activities listed on the game board. (3 in a row vertically, horizontally or diagonally). All needed materials will be on the table in the back of the room. Each activity has something that needs to be turned in. This sheet should be stapled on top of the other sheets.

<p>Maze</p> <p>You and your partner will complete the Maze. Sheet for work must be turned in.</p>	<p>Tic-Tac-Toe*</p> <p>You and your partner will play two games of Tic-Tac-Toe with the problems provided. Sheet for work must be turned in.</p>	<p>IXL</p> <p>J6 in Algebra</p> <p>You and your partner will correctly solve 10 problems. Sheet for work must be turned in.</p>
<p>JENGA*</p> <p>You and your partner must each solve 4 different problems. Sheet for work must be turned in.</p>	<p>Scavenger Hunt</p> <p>You and your partner will complete the scavenger hunt. Sheet for work must be turned in.</p>	<p>Coloring Activity</p> <p>You and your partner will take turns completing the problems and color the design using the appropriate colors.</p>
<p>Quizizz</p> <p>You and your partner will complete the Quizizz using one person's computer. Sheet for work must be turned in.</p> <div style="border: 1px solid gray; padding: 5px; margin-top: 10px;"><p>Ask participants to open joinmyquiz.com and enter this code 1 1 0 9 4 3 2 8</p></div>	<p>Cut and Paste Partner Activity*</p> <p>Each person does a set of problems. The equations with the matching answers are glued onto the appropriate space on the sheet. Sheet for work must be turned in.</p>	<p>Homework Sums</p> <p>You and your partner will complete both sides of the Homework Sums sheet – getting the correct sum for the answers. All work is shown on the sheet.</p>

*has to have a partner – single students need to make a Tic-Tac-Toe not using these

Examples:

This one is used with groups. The technology pieces are the Quizizz and IXL. (The Math Lib has a technology component that can be used as well - this one was purchased online from Teachers Pay Teachers)

BlendEd Stations for 8-4, 8-5 and 8-6

Area of Triangles, Parallelograms and Trapezoids

Station 1

Basic Area Questions
Homework Sums

Station 2

Challenge Questions

Station 3

IXL S3 or S4
Name used: _____

Pythagorean Theorem

Station 1

Math Lib

Station 2

Pythagoras Reading
Quizizz over Reading

Ask participants to open
joinmyquiz.com

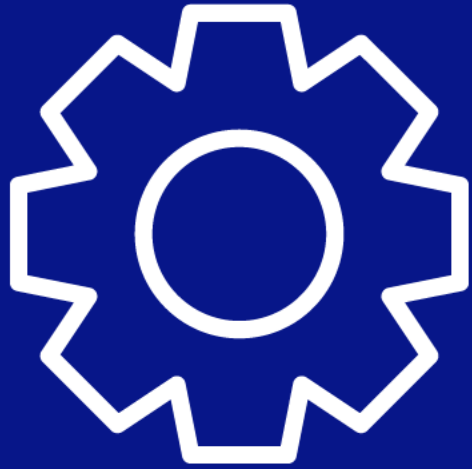
and enter this code

3 3 0 0 0 2 8 4

Name Used: _____

Station 3

IXL Q1
Name used: _____



**Questions?
Comments?
Suggestions?**

Twitter: @DebBulin



